

“SOCIAL WORK PRACTICES AND EDUCATION”

THE NATIONAL WEBINAR SERIES

ORGANIZED BY

SCHOOL OF SOCIAL WORK

ACKNOWLEDGMENT

The School of Social Work (SOSW), IGNOU expresses gratitude to Prof. Nageshwar Rao, Vice-Chancellor, (IGNOU) under whose mentorship, the School conducted the National Webinar Series titled “Social Work Practices and Education”. We are also grateful for the support received from our Pro-Vice Chancellors Prof. UmaKanth Lal, as well as Prof. RP Das, Prof. Satyakam and Dr. Kukreti whose constant motivation and hand holding during each session of the webinar, has given us the much needed impetus.

We are immensely thankful to all the resource persons- Prof. Gracious Thomas, Prof. Kalpana Sarathy, Prof. Neena Pandey, Prof. Pawanindra Lal, Sh.Manjinder Singh Sirsa , Mrs. Poonam Dhandha and Mrs. Neeti Suri Mishra, who devoted their valuable time and shared their experiences with our learners.

Without an active technical support of computer division and regional services division this webinar series would not have been successful; the school expresses its gratitude to the Director COE, CD and RSD, and entire team, for providing their timely technical support to conduct this webinar series. We are thankful to participants, learners and research scholars from SOSW who have been active listeners’ throughout the series. The support of faculties of the School of Social Work in organizing this workshop has been immensely significant.

The Webinar provided the opportunities to not only the social work learners and practitioners but other interested individuals to connect from the convenience of their time and space which gave them the prospect to collect relevant information and build on their knowledge by attending the webinar series.

Prof. Rose Nembiakkim-Director School of Social Work facilitated the team throughout the webinar series. Dr. G. Mahesh as moderator for two sessions consecutively did his work wonderfully by engaging the audience and giving all the needed important information. Dr. Binod Kumar moderated for the third session set the tone for discussion and gave insight on speakers’ deliberation. Dr. Konde Lingaswamy for giving vote of thanks. The entire team of the school, Dr. Saumya, Dr. Sayantani Guin, Dr. N. Ramya and Dr. Kannappa V. Setty for designing and suggesting the resource persons for this webinar.

(Dr. Seema Rani)

Table of the Content

| | Page. No. |
|-----------------------------|------------------|
| 1. Introduction | 6 |
| 2. Sessions | |
| Session I | 8 |
| Session II | 11 |
| Session III | 16 |
| 3. Profiles of the Speakers | 23 |
| 4. Summary and Outcome | 26 |

INTRODUCTION

The School of Social Work, IGNOU has been actively involved in bringing about the relevant social issues from the deliberations for learners. With the current trends of imparting knowledge through online mode, the school has successfully conducted 03 National Webinar Series on **Social Work Practices and Education** with relevant social issues to motivate the learners.

The Webinar series was inaugurated on 9th March 2022 by honorable Vice-Chancellor, Prof. Nageshwar Rao (IGNOU). He appreciated the initiative taken by the school. According to him, learners should get a chance to listen to such deliberations constantly. He impressed with the theme of world Social Work Day and the National webinar series. He said “Principles, Values and Ethics are quite relevant within social work practices and beyond educational environment. The purpose of this webinar series is to give opportunity to everyone to learn so that no one is left behind everyone has to grow and move ahead”.

“Principles, Values and Ethics are quite relevant within social work practices and beyond educational environment. The purpose of this webinar series is to give opportunity to everyone to learn so that no one is left behind “.



Prof. Nageshwar Rao ,Vice-Chancellor, IGNOU

Professor Uma Kanjilal in her special address said “This webinar series will add more values to the social work practices and education.

15th March 2022 marks the **World Social Work Day**, and the school celebrated the same by conducting a webinar series with its theme “**Co-building a new Eco-Social World: Leaving no one behind**”. The school brought experts across the country to one platform to share and exchange knowledge with the learners. The key objective of conducting this event was to engage learners, develop a network, impart knowledge and highlight the role of Social Work Education and Practices.

The school has conducted three sessions in March, April and May 2022. The different themes were taken by the experts.

The first session was titled ‘**Relevance of Social Work Values, Principle and Ethics in Contemporary Times**’.

The second session was titled ‘Experiences of Front Line Workers during COVID-19 and third session was titled Role of Social Work Profession in identifying Gender Roles in Society.

All sessions were organized through online mode with prior registration of learners. Around 1500 learners from different parts of the country joined and benefitted from these sessions. The Sessions went live on You Tube and so far more than 2000 viewers accessed and gained fruitful information from it. The DG News also highlighted the Webinar Series.



SUMMARY OF THE SESSIONS

Session I

Relevance of Social Work Values, Principle and Ethics in Contemporary times



The poster is for a National Webinar Series by IGNOU. It features a yellow and orange color scheme with a decorative border. At the top, it displays the IGNOU logo and NAAC A++ accreditation. The title 'National Webinar Series' is in bold, followed by 'SOCIAL WORK PRACTICES AND EDUCATION' in a dark banner. The specific topic is 'Relevance of Social Work Values, Principles and Ethics in Contemporary Times'. The date and time are listed as 09th March 2022, 11:30 AM - 01:00 PM. The speakers are Prof. Nageshwar Rao (Vice Chancellor, IGNOU), Prof. Uma Kanjilal (Pro-Vice Chancellor, IGNOU), and Guest Expert Prof. Gracious Thomas (Former Director, SOSW, IGNOU). Other participants include Prof. Rose Nambiakkim (Director, SOSW, IGNOU), Dr. Seema Rani (Assistant Professor, SOSW, IGNOU), Dr. G. Mahesh (Assistant Professor, SOSW, IGNOU), and Dr. Binod Kumar (Assistant Professor, SOSW, IGNOU). The event is organized by the School of Social Work, IGNOU. At the bottom, there is a 'LIVE' banner, social media handles (@OfficialPageIGNOU), and a YouTube link (https://youtu.be/VVNmfeGzJ2E).

Indira Gandhi National Open University
National Webinar Series

SOCIAL WORK PRACTICES AND EDUCATION

Relevance of Social Work Values, Principles and Ethics in Contemporary Times

Date: 09th March 2022
Time: 11:30 AM - 01:00 PM

Prof. Nageshwar Rao
Vice Chancellor, IGNOU

Prof. Uma Kanjilal
Pro-Vice Chancellor, IGNOU

Guest Expert
Prof. Gracious Thomas
Former Director, SOSW, IGNOU

Prof. Rose Nambiakkim
Director, SOSW, IGNOU

Programme Coordinator
Dr. Seema Rani
Assistant Professor, SOSW, IGNOU

Moderator
Dr. G. Mahesh
Assistant Professor, SOSW, IGNOU

Vote of Thanks
Dr. Binod Kumar
Assistant Professor, SOSW, IGNOU

Organised by
School of Social Work
Indira Gandhi National Open University

LIVE
www.ignou.ac.in

@OfficialPageIGNOU

<https://youtu.be/VVNmfeGzJ2E>

Speaker: Prof. Gracious Thomas

Date: Wednesday, 9th March 2022


Time: 11:00 am- 1:00 pm

ABOUT THE SESSION


Prof. Rose Nembiakkim, Director, SOSW welcomed all Guest, speakers and the participants. She informed about the school and the courses that the School of Social Work offers. Dr Seema Rani, the programme Co-ordinator explained and gave an informative introduction about the Webinar Series including its objectives and expected outcomes. Prof. Uma Kanji Lal Pro Vice-Chancellor briefed that social work promotes social change, development, cohesion, and empowerment of people and communities. It involves the understanding of human development, behavior, social, economic and economic institutions and interactions.



Prof. Uma Kanji Lal Pro Vice-Chancellor, IGNOU



Social work promotes social change, development, cohesion, and empowerment of people and communities. It involves the understanding of human development, behavior, social, economic institutions and interactions.



Prof. Gracious Thomas highlighted the first code of ethics was drafted by Mary Richmond who was the founder of professional social work education. He elaborated on the twelve principles of social work and traditionally practiced six methods namely, casework, group work, community organization, social welfare administration, social action and social work research as well as the six contemporary methods namely advocacy, networking, awareness campaign, resource mobilization, strengths-based practice and public interest litigation. Social values grew



Prof. Gracious Thomas, Former Director SOSW, IGNOU

out of humanitarian and democratic ideas, therefore India being the largest democracy in the world has a special role to play in reaching out to the disadvantaged and the marginalized so that the concerns of everyone in need of help is addressed.

Prof. Thomas also mentioned that while formulating code of ethics, it is important to take into consideration various sections of the society and address various issues that people face. The code of ethics reflects the mission and vision of social work practice in the Indian context. The Code of ethics also took into consideration the contribution made by various religions, contributions of various social movements, various governments including the Planning commission through five year plans. He talked about the extended code of ethics with 12 values in order to address the contemporary issues and make people feel that their concerns are taken into consideration. These 12 codes of ethics discussed are

Values of Social Work Profession

- | | |
|--------------------------------------|--------------------------|
| 1. Service to humanity | 2. Social Justice |
| 3. Importance of Human Relationships | 4. Competence |
| 5. Integrity | 6. Hard work |
| 7. Teacher ship | 8. Loyalty to Profession |
| 9. Cultural Sensitivity | 10. Patriotism |
| 11. Responsibility and commitment | 12. Truth |

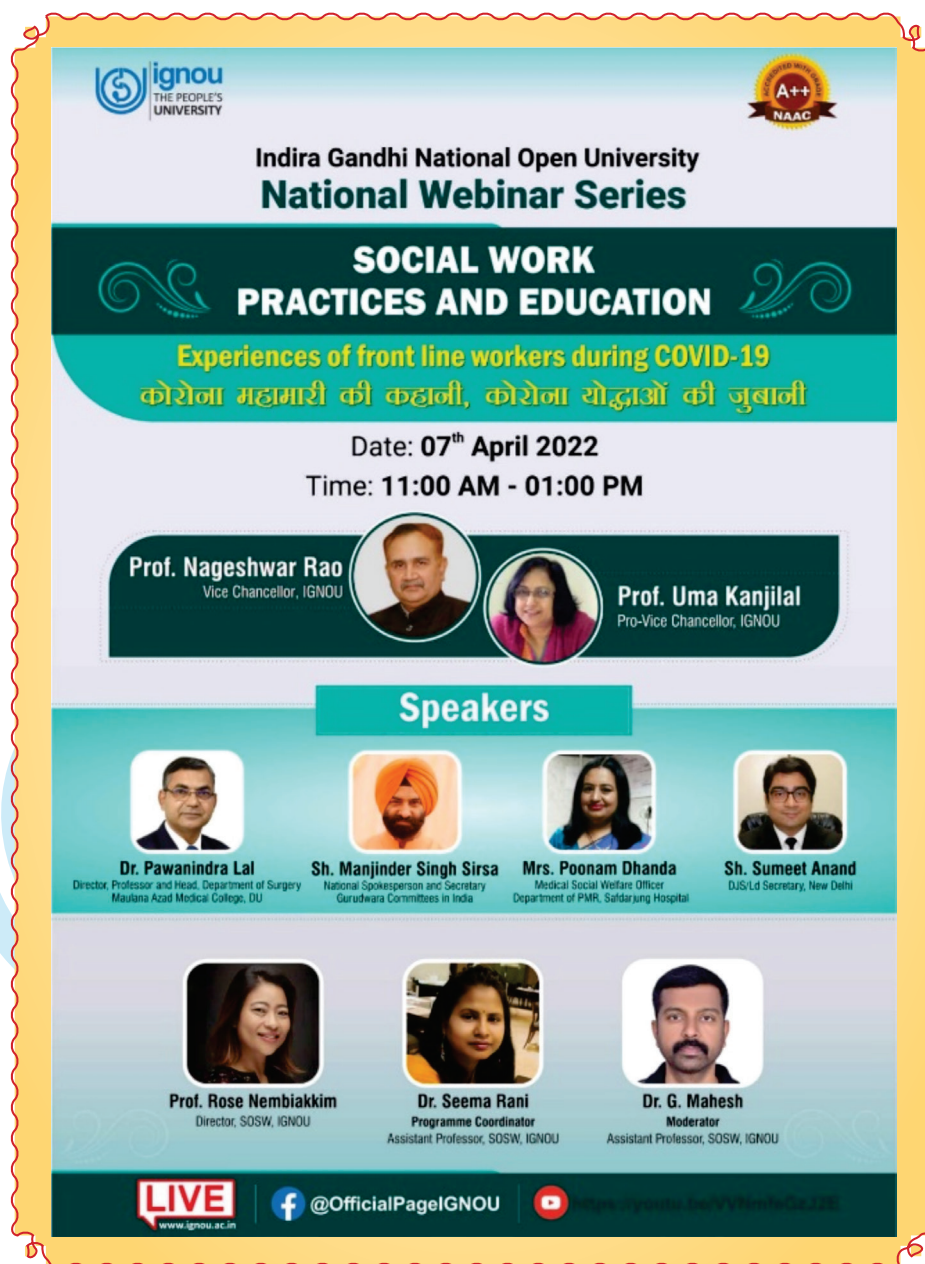
In describing the values of social work, Prof. Thomas explained about the society where we live, the importance of human should perform social relations and to interact with people from various walks of life.

Learning from the session

As per Prof. Thomas, core values of social work include compassionate service to others, fostering dignity for all individuals, social justice and promoting strong human relations. The core values alone state the importance of social work today as the social work values promote impactful individuals, communities and societies. Studying social work is a path toward a fulfilling profession, one filled with countless opportunities to impact lives both individually and collectively. The importance of social work lies in its aim to confront social issues in all facets of life—from providing one-on-one support for family welfare to shaping legislative policies that eradicate systemic injustices. Social work involves helping others overcome challenges.

Session II

Experiences of Front line Workers during COVID-19



The poster is for a webinar titled "SOCIAL WORK PRACTICES AND EDUCATION" with the subtitle "Experiences of front line workers during COVID-19" and its Hindi equivalent. It is organized by IGNOU. The date is 07th April 2022, from 11:00 AM to 01:00 PM. It lists several speakers, including Prof. Nageshwar Rao, Prof. Uma Kanjilal, Dr. Pawanindra Lal, Sh. Manjinder Singh Sirsa, Mrs. Poonam Dhanda, Sh. Sumeet Anand, Prof. Rose Nembakkim, Dr. Seema Rani, and Dr. G. Mahesh. The poster also includes social media handles and a live stream link.

ignou
THE PEOPLE'S
UNIVERSITY

Indira Gandhi National Open University
National Webinar Series

**SOCIAL WORK
PRACTICES AND EDUCATION**

Experiences of front line workers during COVID-19
कोरोना महामारी की कहानी, कोरोना योद्धाओं की जुबानी

Date: 07th April 2022
Time: 11:00 AM - 01:00 PM

Prof. Nageshwar Rao
Vice Chancellor, IGNOU

Prof. Uma Kanjilal
Pro-Vice Chancellor, IGNOU

Speakers

Dr. Pawanindra Lal
Director, Professor and Head, Department of Surgery
Maulana Azad Medical College, DU

Sh. Manjinder Singh Sirsa
National Spokesperson and Secretary
Gurdwara Committees in India

Mrs. Poonam Dhanda
Medical Social Welfare Officer
Department of PMR, Safdarjung Hospital

Sh. Sumeet Anand
DJS/Ld Secretary, New Delhi

Prof. Rose Nembakkim
Director, SOSW, IGNOU

Dr. Seema Rani
Programme Coordinator
Assistant Professor, SOSW, IGNOU

Dr. G. Mahesh
Moderator
Assistant Professor, SOSW, IGNOU

LIVE
www.ignou.ac.in

@OfficialPageIGNOU

https://www.youtube.com/watch?v=...

Speakers:

Dr. Pawanindra Lal

Sh. Manjinder Singh Sirsa

Dr. Neeti Suri Mishra

Mrs Poonam Dhanda

Date: Thursday, 7th April 2022

Time: 11:00 am- 1:00 pm

ABOUT THE SESSION

Prof. Rose Nembiakkim, Director, SOSW gave a welcome address highlighting the courses that the School of Social Work offers. Dr Seema Rani gave an informative introduction to the Webinar Series including its objective and expected outcomes. Prof. Uma Kanji Lal PVC highlighted the need of Covid warriors during the most pressing time in our society and appreciated the efforts made by each and everyone.

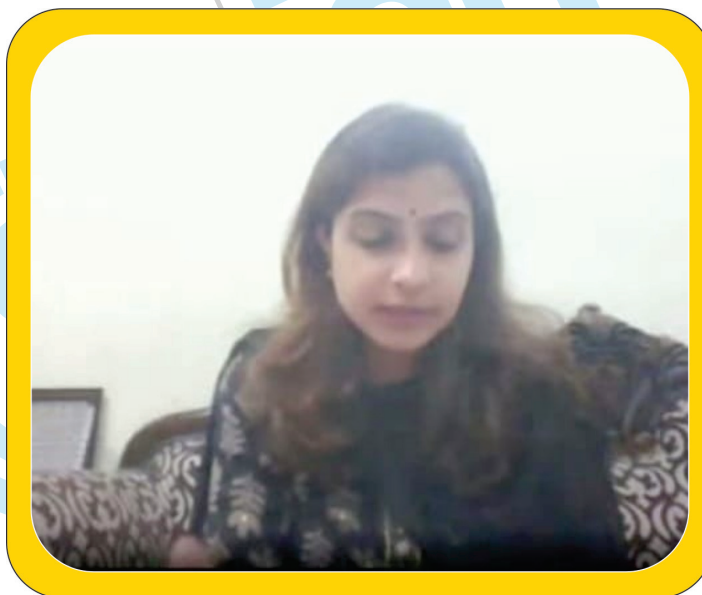
Dr. Pawanindra Lal shared his experiences on difficulties faced by the doctors and paramedical staff in the tragic state of COVID-19. He explained the contribution of medical social workers and philanthropists to arrange all possible resources within the country and from outside to help people suffering in the pandemic. There was a scarcity of proper pieces of equipment. The doctors, nurses and other staff performed their duties studiously despite the scarcity of standard equipment such as standard N-95 masks and its limited number. Doctors and other staff used to dry masks under the sun to reuse them again. They did their duty relentlessly even though their body was soaked in sweat. Their experiences were touching as when the situation during covid-19 was worst and distance was mandatory to avoid the spread of the virus, frontline workers performed their duty being in a dangerous situation. Without seeing their loved ones for days and weeks at a stretch, they performed their duties and followed their deadlines with utmost sincerity. Even in the worst of situations, when there was a shortage of life-saving resources, social workers and philanthropists performed their duties with perseverance and dedication.



*Prof. Pawanindra Lal, Director Professor and Head,
Department of Surgery, Maulana Azad Medical
College (University of Delhi)*

*“Doctors and other staff used
to dry masks under the sun to
reuse them again. They did
their duty relentlessly even
though their body was soaked
in sweat”*

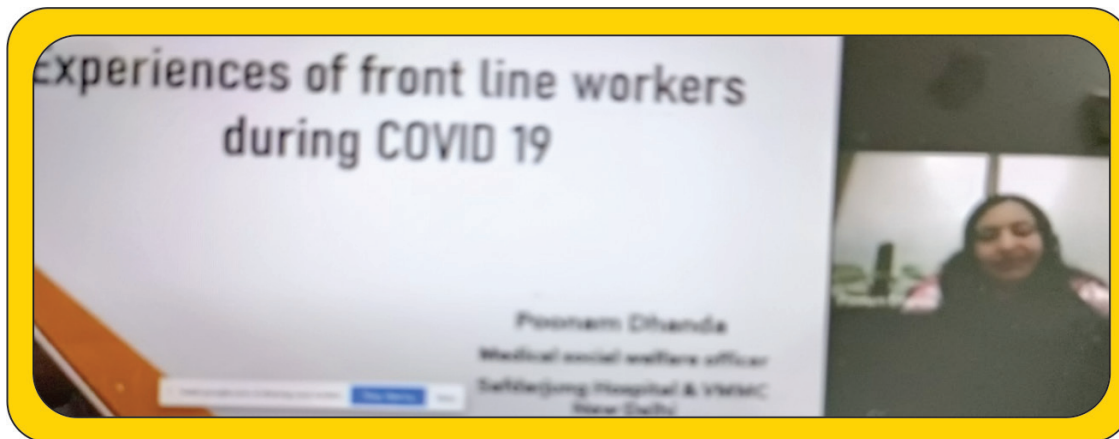
Dr Neeti Suri Mishra threw light on the work done by DALSA during the pandemic. DALSA is dedicated to provide all legal help to needy people. It works for developing novel training and skill through developmental methodologies. As per her, during COVID-19 posters, banners, and pamphlets were placed on shops so that needy people via women, children, aged can know about the services of DALSA whenever they visit to shop. Special services and amenities were provided to women especially sex workers to secure their survival. Services were also rendered on legal aid, compensation, rights and domestic violence. The public was made aware of how to remain calm post-pandemic. The speaker also described how the DALSA came forward to offer meals to and the importance of legal assistance during the Covid-19 period, as well as the function of the DALSA in providing legal services to the most disadvantaged members of society. The speaker discussed about the PAN India movement too and described about the awareness compaign to death with mental health issues.



Dr. Neeti Suri Mishra, Secretary, DALSA

Mrs. Poonam Dhanda started with how the COVID-19 affected and impacted. There were concerns about Physical health, safety and security. She shared, being front line workers it was very difficult for them to maintain a healthy life style in the middle of health crises. They have gone through fear, anger, anxiety and unprecedented stress. She explained here her experiences with behavioral, environmental, and dietary changes that have become a part of life due to immobility from home. She also expressed the immense work done by doctors, nurses, and other frontline workers. The situation was devastating because there was chaos all around. In hospital work load was also elevated, no leave. There is anxiety, stress increased among all the staff. Stigma was also attached with the pandemic due to rumor, lack of adequate information. The speaker has elaborated how

these challenges and difficult circumstances developed their personnel and professional growth. She also discussed the help rendered to PWDs (Person with disability). She shared about Tele counseling services, Vaccination companion, , research activities , role of CSR, funding agencies etc.



Mrs. Poonam Dhandha , Medical Social Welfare Officer, Safdarjung Hospital, New Delhi

Frontline workers sacrificed their devotion to duty without any break, separation from their family members due to fear of the spread of the virus, irritation due to masking, PPE suit all these experiences and challenges give them strength to deal with pandemic with more enthusiasm and dedication. The speaker also expressed the reward and regards they received from public, media and different government organizations

COVID-19 experiences and challenges give front line workers the strength to deal with pandemic with more enthusiasm and dedication



Sh. Manjinder Singh Sirsa: Secretary of Gurudwara Committees in India

Sh. Manjinder Singh Sirsa explained how he and his team worked relentlessly to provide langar (free food) to people who were unable to feed themselves due to the lockdown. They also arranged for 100 oxygen beds inside Gurudwara Rakabganj Sahib during the second wave of COVID-19 to help meet the declining health and emergency resources in the country. His team reached and fed around 2 lakh people in Delhi.

Learning from the Session

Needless to say, doctors, nurses and other paramedical staff working in healthcare sectors were particularly vulnerable to the highly infectious disease. In response to the global pandemic, the under-resourced medical fraternity faced unprecedented challenges. In the fight against corona virus, the brave medical army stands strong with thermometers, stethoscopes, and ventilators as their weapons. Not to forget, medical researchers were working day in and night against all odds, hoping to find the antidote to the disease.

Putting their own lives at risk with selfless determination for the sake of saving lives, they truly are our heroes in those challenging times. While they are putting their health, families, and most importantly their own lives at risk, the least we could do was appreciate their efforts and cooperate by staying safe indoors. That being said, it is good to see tributes pouring in for all the medical heroes working in scrubs.



Session III

Social Work Contribution in Defining Gender Roles in the Society



ignou
THE PEOPLE'S
UNIVERSITY

Indira Gandhi National Open University
National Webinar Series

**SOCIAL WORK
PRACTICES AND EDUCATION**

3rd Session on
Social Work Contribution in Defining Gender Roles in the Society

Friday, 13th May 2022
Time: 11:00 AM - 01:00 PM

Prof. Nageshwar Rao
Vice Chancellor, IGNOU

Prof. Uma Kanjilal
Pro-Vice Chancellor, IGNOU

Speakers

Professor Kalpana Sarathy
Deputy Director, TISS,
Guwahati Campus

Professor Neena Pandey
Department of Social Work,
University of Delhi

Prof. Rose Nembakkim
Director
SOSW, IGNOU

Dr. Seema Rani
Programme Coordinator
Assistant Professor, SOSW, IGNOU

Dr. Binod Kumar
Moderator
Assistant Professor, SOSW, IGNOU

Dr. Konde Lingaswamy
Vote of Thanks
Assistant Professor, SOSW, IGNOU

LIVE
www.ignou.ac.in

@OfficialPageIGNOU

<https://youtu.be/VVNmfeGzJ2E>

Speakers: Prof. Neena Pandey and Prof. Kalpana Sarathy

Date: Friday, 13th May 2022

Time: 11:00 am- 1:00 pm

ABOUT THE SESSION

Prof Rose Nembiakkim gave a welcome address to all the guests and introduced about the webinar, where she explained that the webinar will throw light on gender roles in the society, which are cultural yet personal.

The moderator introduced the two guest speakers of the webinar. Dr Seema Rani then gave an informative introduction to the Webinar Series including its objective and expected outcomes

She also welcomed and introduced the Pro-Vice Chancellor Prof Uma Kanjilal who gave a brief introduction about the role of social work and social work contribution in defining gender roles.

The facilitator then opened the floor for Prof. Neena Pandey.

Prof. Neena Pandey started her speech by considering gender issues as an essential component of understanding in the social work profession. She is committed to this theme as her work, and research is directed toward gender issues. She stressed on the fact that gender is always linked up with women therefore the role of the Social work profession or social worker is relevant to clearly define, refine, and research. According to her, social work cannot be done without a complete understanding of gender issues, as social work talks about humanity, equality. She quoted Dominili and the feminist Jacques Lacane. According to the feminist, women are not even an identity, she has no existence and she is beyond binary opposition. In her discourse she expressed how we face gender inequality in our day-to-day life. She enbressed how folk songs, movies and marriages depict women as an entity concerning men. Sociologically we need to question whether social work has a role to play in working with rural women and work towards a more empowered picture of women. She insisted social workers to incorporate gender-just terms in daily reports and assignments and programmes.

Highlighted that values of liberty, choice, freedom, justice, and empathy are the values principles on which social work is rested and all these values are important for all the endeavors one wants to fulfill. The Constitution gives us the strength to practice social work in our domains and environment. The social work Profession allows questioning against injustice.

For women being aware of one's health and mental health is very crucial. Domestic violence observes the role of a counselor with women and all counselors require training on gender sensitization. The student of social work need to develop a critical lens and

understand issues more holistically, so that social work can aptly contribute towards defining gender roles.

Prof. Pandey, then gave reference from Andrea Dworkin's book '**Pornography: Men possessing women**', where she talked about the seven tenets of the supremacy of men over women.



Prof. Neena Pandey, University of Delhi

“Sociologically we need to question whether social work has a role to play in working with rural women and work towards a more empowered picture of women. That as social workers, one should incorporate gender-just terms in our daily reports and assignments by students, counselors and the clients.”

Prof. Pandey discussed these seven tenets as:

1. Metaphysical assertion of a man is I am as I exist. Does it question whether women and other vulnerable genders realize that they exist? It questions how much women have access to their choices. All this comes from the bigger institutions of patriarchy which gives men the license to be more assertive and powerful.
2. Second tenet is to present power as physical strength. However it is important to redefine the notions of power in order to stop sexual abuse and domestic violence against women which is a direct result of the notion that men are more physically stronger than women.
3. Third tenet is that men have a capacity to terrorize. It also states that the practice and orientation that women have been given is to abide by those fears being generated by the person who has the capacity to terrorize. This furthers the
4. Fourth tenet is men claim name. It says that men project themselves as being intellectually more rational. It is often observed in social work practice that men speak on behalf of women. It is considered that when a man speaks it is more authentic but when a woman speaks it is questionable.

5. Fifth tenet is the power of owning. The domain of decision-making is often projected by the agency of men and women are trained to accept that decision.
6. Sixth tenet is where supremacy is claimed over women through power of money. This power of money plays an important role in every institution like marriage etc. It further reinforces the gender differences and leads to many cases of dowry-related violence.
7. Seventh tent is that Man has the power to sex. This means that decisions of having physical relations are entirely in the hands of men, further subjugating women.

The speaker further talked about the differences in the health sector. It is observed that in the Stating facts from a report, the speaker said that there are around 120 women who desire contraceptives but lack access to it. There are around 80 million unintended pregnancies reported, out of which 45 million have ended in abortion. 90 million of these abortions were unsafe with 68 thousand deaths annually. Hence, the speaker highlighted the need to work in the area of reproductive women's health. She further explained how structural violence has impacted the state and condition of women and domestic violence in India. Religious institutions, mythologies etc have pushed the marginalized entities further into the fringes of the society. Hence, these structural inequalities need to be questioned by a social worker.

The speaker further threw light on the movement of women and women suffering during the World War -2 which claims that women are active agents provided that they have the right space to perform. Hence social workers should work on creating a space where women can speak for themselves. She also mentioned the need to accept that personal is political because many cases of domestic violence begin within the confines of a home and it is very important to acknowledge these issues of violence at a structural and political level.

Further the speaker quoted one of her research papers where she interviewed older women and asked them how about their choice during the partition, to which the women said that if they had the choice, then history wouldn't be written the way it is written.

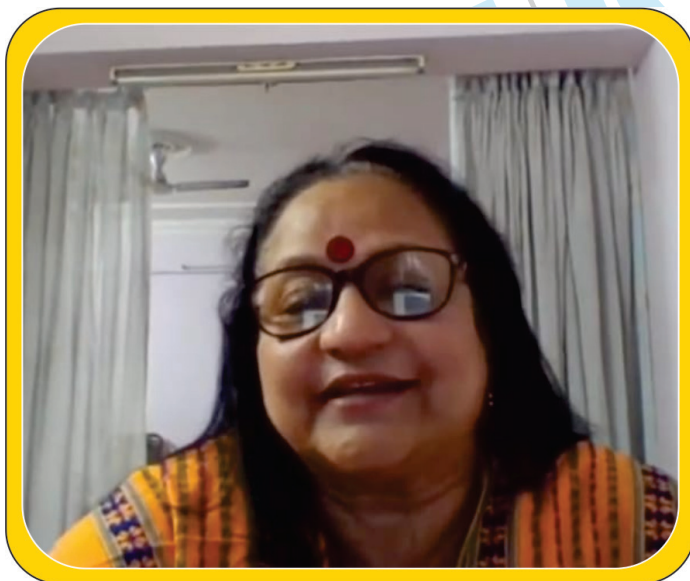
The speaker then talked about initiatives of the Social

“Being aware of one's health and mental health is very crucial. Domestic violence observes the role of a counselor with women and all counselors require training on gender sensitization. The students of social work need to develop a critical lens and understand issues more holistically, so that social work can aptly contribute towards defining gender roles.

service unit in Delhi in collaboration with Tata Institute of Social Science, Jamia Milia Islamia and Delhi School of Social Work where social workers were presented in Thanass to understand and address the issues of domestic violence structurally at a thana level. She also threw light on the 'Bell Bajao' initiative to give pause to crime. The speaker then concluded her session by saying that 'Let's say no to normal and be rational'.

The facilitator then introduced Prof. Kalpana Sarathy and opened the floor for the speaker.

Prof. Kalpana Sarathy, who specializes in the area of mental health in social work, spoke about the social work contribution to gender roles through the lens of the importance of mental health. She said that it took a pandemic to acknowledge and recognize the need and importance of mental health in India. Prof Sarathy, defined mental health as 'A state of well-being in which a person can realize their abilities, can cope with the normal stress of life, can work productively and make a contribution to their community.' She further stated that there can be no health without mental health.



Prof. Kalpana Sarathy, Guwahati Campus, TISS

Social work with its crux being to examine social justice and different types of marginalization in the society helps to examine various gender identities and its role in social justice.

The speaker said that some of the profound social divisions in our culture are the ones we make by gender. She further stated that our gender in some way, determines not only our access to resources but also one's life choices and options that one has before them. However, social work with its crux being to examine social justice and different types of marginalization in the society helps to examine various gender identities and its role in social justice.

She further threw light on patriarchy and its impact on gender relations on men, women and children. She also said that it is important to examine the impact on public and private spaces and what is the location of gender on that, as it is often observed that women are confined to private spaces whereas public spaces are mostly occupied by men. Prof. Sarathy stated that it is important to accept things and people who do not conform to the heteronormative way of thinking. She said that it is important to look at differences and celebrate these differences, as many of these are subjected to bullying and harassment.

She said that since the pillars of social work rest on values such as diversity, marginalized groups, social justice etc, it is important to penetrate social work in gender roles.

The speaker said that as social workers, She further said that there is no stark difference in terms of prevalence or incidence across different genders as far as mental health is concerned. However, there is a difference in patterns and symptoms of disorders and one of the primary reasons for this difference is the social context that social workers can address. The speaker prof. Sarathy also emphasized on the fact that the social work curriculum needs to be more inclusive in nature and must include queer affirmative practices and counseling. She further said that there is a need to encourage more research, advocacy and affirmative practices among students of social work. There is also a need to bring in social work service in schools, residencies, department treatment settings etc so that people don't feel harassed and challenge the prejudices of the society.

“It is important to examine the impact of public and private spaces and what is the location of gender on that. As it is often observed that women are confined to private spaces whereas public spaces are mostly occupied by men.”

The facilitator then opened the floor for questions where many students engaged with the speakers to gain more clarity on the concept of gender in the field of social work.

Learning form the Session

The session emphasized the role of the social work profession in identifying different gender perspectives and how these perspectives look at the impact of gender on people's opportunities, social roles and interactions. Gender perspective in social work focuses particularly on gender-based differences, and status and considers how such discrimination shapes the immediate needs and as well as long-term interests of women empowerment. The role of social work in minimizing gender inequality needs to be embodied during the training of the social work professionals.

Before the session was concluded the Vice chancellor Prof. Nageshwar Rao thanked the speakers for sharing their valuable insights and taking time to be a part of the webinar series. In his address he shared that the department started many programs in online mode like e-vidya Bharti which can reach to African students. He also thanked Prof. Thomas for his contributions in establishing the department of social work. He further thanked Prof. Pandey for presenting a very clear and precise picture of gender roles in social work. He emphasized that for social work, it is important to reach the corners of the society hence, IGNOU is working together in order to ensure that the teachings of social work can reach the corners of the country so that nothing acts as a barrier to learning.

The webinar session ended with a vote of thanks by Dr. Konde Lingaswamy



Prof. Nageshwar Rao ,Vice-Chancellor, IGNOU

PROFILE OF THE SPEAKERS

1. Professor Gracious Thomas

Professor Gracious Thomas is the former Director of the School of Social Work, IGNOU. He taught in three University colleges/schools of social work namely, DAVV, Indore; Utkal University, Bhubaneswar; and IGNOU, New Delhi. Besides being a professional social work educator, he was also deeply involved in the practice of social work for almost four decades now. His academic colleagues from across the country have recorded his major contributions in the form of books, research publications and other documents which are in the public domain. One of the important publications is the Report of the Post Doctoral Fellowship awarded to a Delhi University College faculty by the Indian Council of Social Science Research (ICSSR), Ministry of Human Resource Development (MHRD), and the Government of India. Again it is very rare that we come across full-fledged publications of living people, particularly Social Work teachers. One can find almost a dozen books published by his research scholars and academic social work colleagues on various themes based on his contribution.



2. Professor Kalpana Sarathy:



Prof. Kalpana Sarathy is a Professor of Social Work at the Centre for Public Health, and also the Deputy Director at the Tata Institute of Social Sciences, Guwahati Campus. She has earlier served as Dean, School of Social Work, (TISS). She taught at the Department of Social Work, University of Delhi and at the Department of Social Work, Mizoram University and has a teaching career spanning over two decades. Prof. Sarathy has completed her post-graduation in Social Work from the Madras School of Social Work, University of Madras. Thereafter, she completed her M. Phil. in Psychiatric Social Work from the NIMHANS, University of Bangalore and her doctoral research from the Centre of Social Medicine and Community Health at the Jawaharlal Nehru University. Before teaching, she worked as a counsellor at a women's resource centre in an NGO in Delhi. She has successfully guided several M. Phil. and doctoral candidates at the Mizoram University and her research interests are in the areas

of health and mental health. The focus of her interests is on gender and sexuality, Disability, Mental Health, Cancer, HIV/AIDS, the impact of Conflict on mental health in the North East of India and addictions research, and risk behaviour. Her consistent interests over the years have also been in the area of Child Mental Health and Child Protection. She is a member of many academic bodies and has spent around 20 years in the North East of India. She is also a member of the Governing Board of Butterflies, a Programme for Street and Working Children.

3. **Prof. Neena Pandey: Professor at Department of Social Work, University of Delhi**

Prof. Neena Pandey has more than two decades of teaching and research experience with the University of Delhi. Initially, she taught at the Aditi Mahavidyalaya, a constituent college of the University of Delhi. She had been the Performed host of administrative responsibilities at the Department of Social Work and Aditi Mahavidyalaya. Besides, she also holds several important positions in various social sector organizations and government bodies. Her area of interest includes Women and Gender Issues, Social Work with Individuals Social Work and HIV, and Social Work in correctional settings; she has written many research papers and book chapters and participated in national and international conferences. She has delivered more than 50 guest lectures on gender sensitization for Delhi Police during their training.



4. **Prof. Pawanindra Lal:**



Dr Pawanindra Lal (MS, DNB, FIMSA, FCLS, FRCSEd, FRCSGlasg, FRCSEng, FACS, FAMS, Consultant Laparoscopic Gastrointestinal, Oncology & Bariatric Surgeon, Chairman, Division of Minimal Access Surgery, Vice President, International College of Laparoscopic Surgeons, President-Elect - India Hernia Society Immediate Past President, Association of Surgeons of India Delhi Chapter, Chairman - Surgical Instruments

Committee - Bureau of Indian Standards National EC Association of Surgeons of India (ASI) National EC Indian Association of Gastrointestinal Endoscopic Surgeons (IAGES) Director Professor and Head, Department of Surgery, Maulana Azad Medical College (University of Delhi) & Associated Lok Nayak Hospital, New Delhi - 110002, India. Formerly Executive Director and CEO, NBEMS Dr B C Roy National Award 2016 FICCI Health Care Award 2016 Delhi State Health Award 2015 Commonwealth Fellowship Award (UGC-HRD) 2007.

5. **Shri Manjinder Singh Sirsa :**

Mr. Sirsa was the ex-president of DSGMC(Delhi Sikh Gurudwara Management Committee). He and his team worked relentlessly to provide langar (free food) to people who were unable to feed themselves due to the lockdown. They also arranged for 100 oxygen beds inside Gurudwara Rakabganj Sahib during the second wave of COVID-19 to help meet the declining health and emergency resources in the country. His team reached and fed around 2 lakh people in Delhi during the Covid 19 epidemic.



6. **Mrs. Poonam Dhandha:**

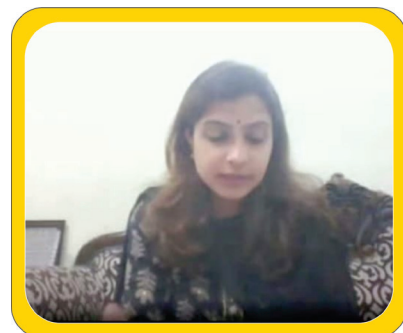


Mrs Poonam is working as Medical Social Welfare Officer in the Department of PMR, Safdarjung Hospital, and New Delhi since 1990 and designated as Media Spokesperson of Safdarjung Hospital. She has worked as Research Associate in a project entitled 'Monitoring of Drug Abuse' at AIIMS. She worked as Research Officer in a project entitled "Impact of NSS on the attitude of college students. She has served as a counsellor at Lakshmi Bai College, Delhi University. She has 31 years of academic

experience in teaching Psychology & Sociology to BPO students (Bachelor's degree in Prosthetic & Orthotics) at SJH. She had been Visiting Faculty at IP University and Delhi University for the past 21 Years (Teaching Sociology at BCIP, ISIC & Pt. DDUIPH). She is a Registered Academic Counselor at IGNOU (Teaching BSW & MSW Students). She has taught Sociology to B.Sc. Nursing Students at College of Nursing VMMC. She authored two books and published articles in Journals. She has been actively involved in delivering talks on AIR and DD News on disability, health and social issues. She performed as a resource person at Indian Spinal Injury Centre, New Delhi, VRC, Ludhiana and IGNOU.

7. **Mrs. Neeti Suri Mishra:**

Mrs. Neeti is Secretary of the District Legal Services Authority (Central District) and joined Delhi Judicial Service in the year 2013. She has worked with Luthra and Luthra Law Offices as an Associate for two years. She has cleared the Delhi Judicial Service Examination. She has worked as Metropolitan Magistrate (NI Act) and as a Civil Judge in Dwarka District Court. She has secured the degree of B.A, LLB (Hons.)



SUMMARY AND OUTCOME

Impact created through the sessions

The profession of social work stands on the pillars of social justice, equality, the dignity of individual life, freedom, opportunities, and empowerment. The importance of social work lies in its aim to confront social issues in all facets of life- from providing one on one support for family welfare to shaping legislative policies that eradicate systemic injustices. Social work involves working with various communities, understanding and acknowledging their problems and challenges, and working together with the community for rightful interventions. Webinars like these, as conducted by IGNOU provide a wide spectrum of learning and knowledge for many students and scholars of social work. With its platform of open learning and the ability to 'reach the unreached', the webinar was able to cater to more than 500 learners across various regions. The webinar was held in the online mode as per the convenience of the students in order to maximize its reach so that no student is deprived of learning. The other social media used were YouTube, DG news, Google recording which provided the learners hands on learning materials.

Sessions like these provide a more holistic understanding of the field of social work. By listening to prominent social workers both educationist and practitioners about their experience, practices and challenges, one gets a direct insight into the practice and challenges that engulfs social work. It also allows one to go beyond textbooks and learn from one's experience and practice, hence bridging the gap between theory and practice of social work. This also helps generate future social workers who have a better and more holistic understanding of various issues. It will also help them see issues through a more diverse lens. One also gets to learn about issues that are not traditionally incorporated in social work curriculum like issues of mental health, mental health through a gendered lens, challenges faced by frontline workers during COVID-19 etc. This opens the scope of learning for aspiring young social workers.

The webinar sessions further enriched the academic scope of social workers by including various and diverse topics and social issues which can be touched upon. The sessions have encouraged possible collaboration among various scholars and institutions of social work in order to develop and unite the social work fraternity in India.

Dr. Seema Rani, SOSW